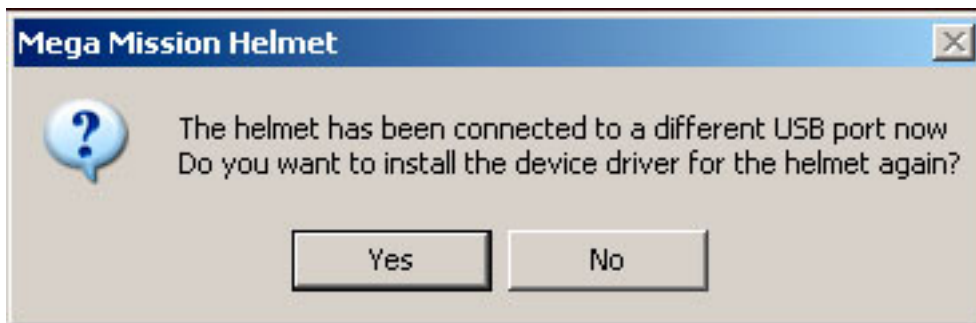


Mega Mission Helmet: Why do I get a "Do you want to install the device driver for the helmet again" dialog window when I plug in my Power Ranger Helmet?

For users with multiple USB ports on the same computer, the following windows may appear concurrently when you plug the device into a different USB port for the first time.



Mega Mission Helmet: Why do I get a "Do you want to install the device driver for the helmet again" dialog window when I plug in my Power Ranger Helmet?

- Cancel the "Welcome to the Found New Hardware Wizard" dialog window.
- Click YES to the "Do you want to install the device driver for the helmet again?" dialog window.
- Click "Continue Anyway" to the following dialog window.



*Unique solution ID: #1031
Author: Bandai Customer Service
Last update: 2009-11-18 00:52*